

Select a County ▶ **Metcalfe County**

**1** **2** **3** **4**

**These results reflect the impact of COVID and are not a judgment on our system or its educators. The intent of this information is so that you can work locally to help build a new foundation for education, one that is stronger, more resilient & moves the Commonwealth toward a Big Bold Future despite the pandemic and other challenges that surround us.**

## WHAT IS YOUR COMMUNITY'S STORY?

In 2018, the Prichard Committee published Community Profiles for all 171 Kentucky School Districts in an effort to start local conversations about the educational needs of each community to inspire change, one school at a time. Three years later, the COVID-19 pandemic has taken us backward in our academic progress, especially for low-income students, students of color, and students with special needs.

We have long held the position that state assessments are not a measure to punish schools, educators, or students, but a tool to provide data about student performance so administrators, policymakers, and communities can make informed decisions about improving academic outcomes. This position has never been more important than it is today.

Now is the time for communities to come together and share in the development of a *new normal* - one that responds to the needs elevated by the pandemic - like mental health and early childhood - and expands innovations that proved promising. A *new normal* also means we listen closely to the needs of parents and students now, as we are all still in the midst of balancing a COVID-safe life and new normal in our own lives and communities. Our public education system must respond to these needs in new and innovative ways to remain relevant and to deliver on the promise of public education.

## WHY DOES EDUCATION MATTER?



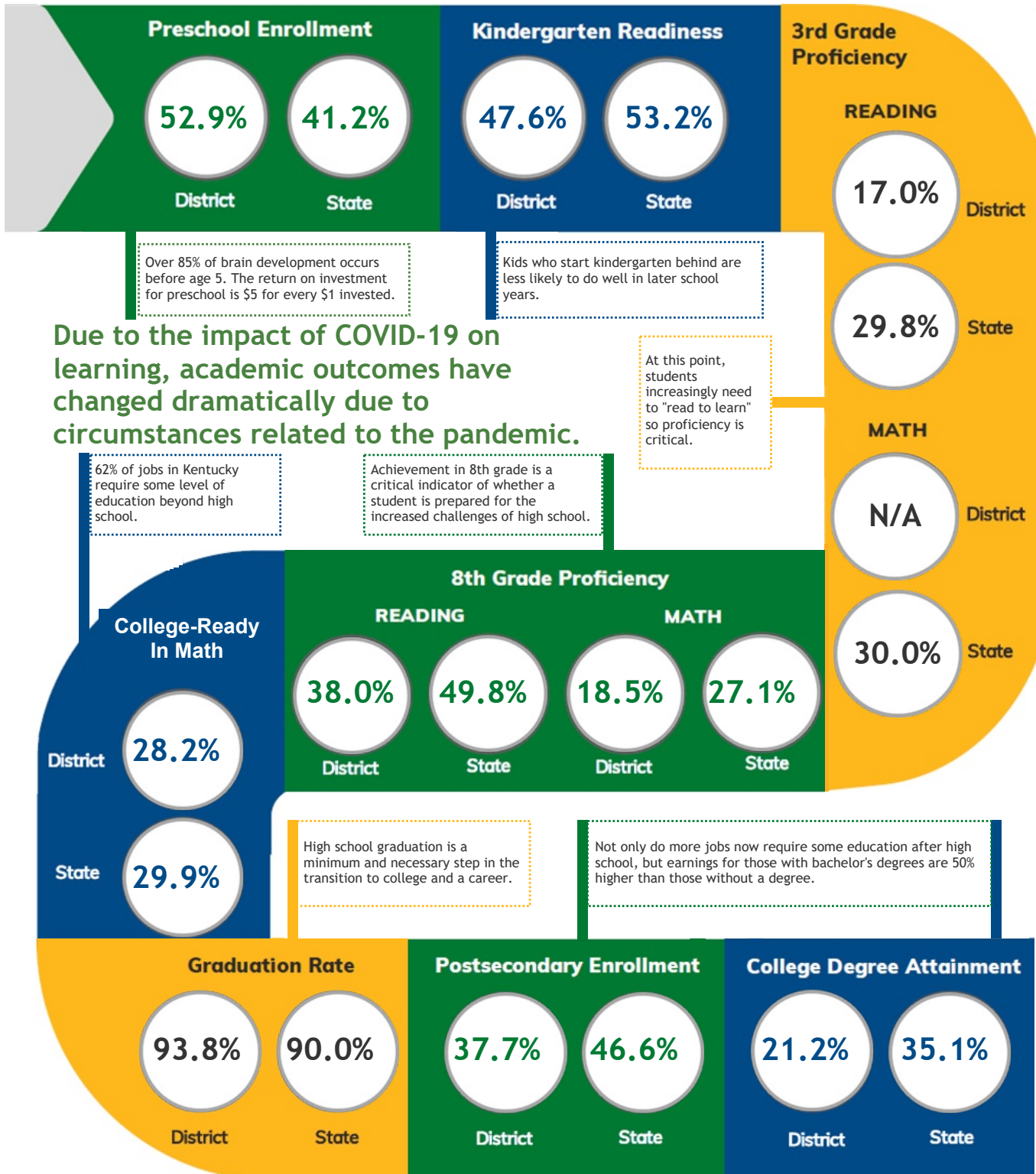
**Discuss the impact of COVID locally...**

**Take our survey and share it with others in your community.**  
<https://www.surveymonkey.com/r/PCCOVIDImpact>



- 1** **What are the current barriers to learning? Consider the different perspectives of students, educators, families, & communities.**
- 2** **What are some best practices you are seeing locally that are reducing these barriers?**
- 3** **What do you feel is the best local use of federal COVID recovery dollars for education?**

## HOW ARE STUDENTS DOING ON THE PATH TO A SUCCESSFUL LIFE?

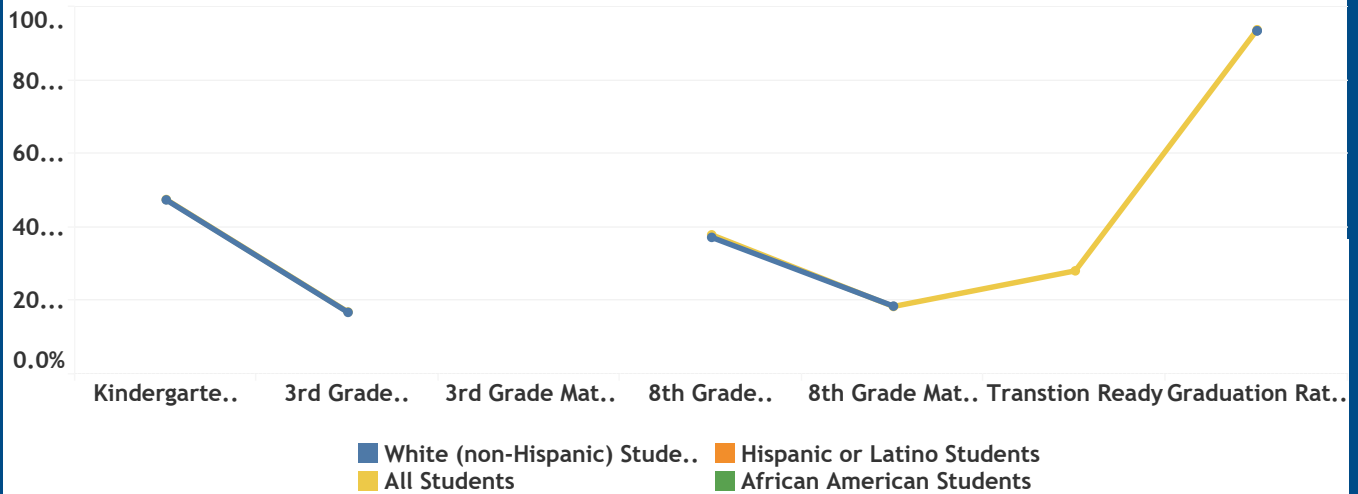


Note: If a data point on a line is missing or part of a group's line does not appear, data for that student group is unavailable. This may be due to concerns for student privacy, typically due to small sample size or results for students being similar enough that individual students may be identifiable.

## NOT ALL STUDENTS START AT THE SAME PLACE

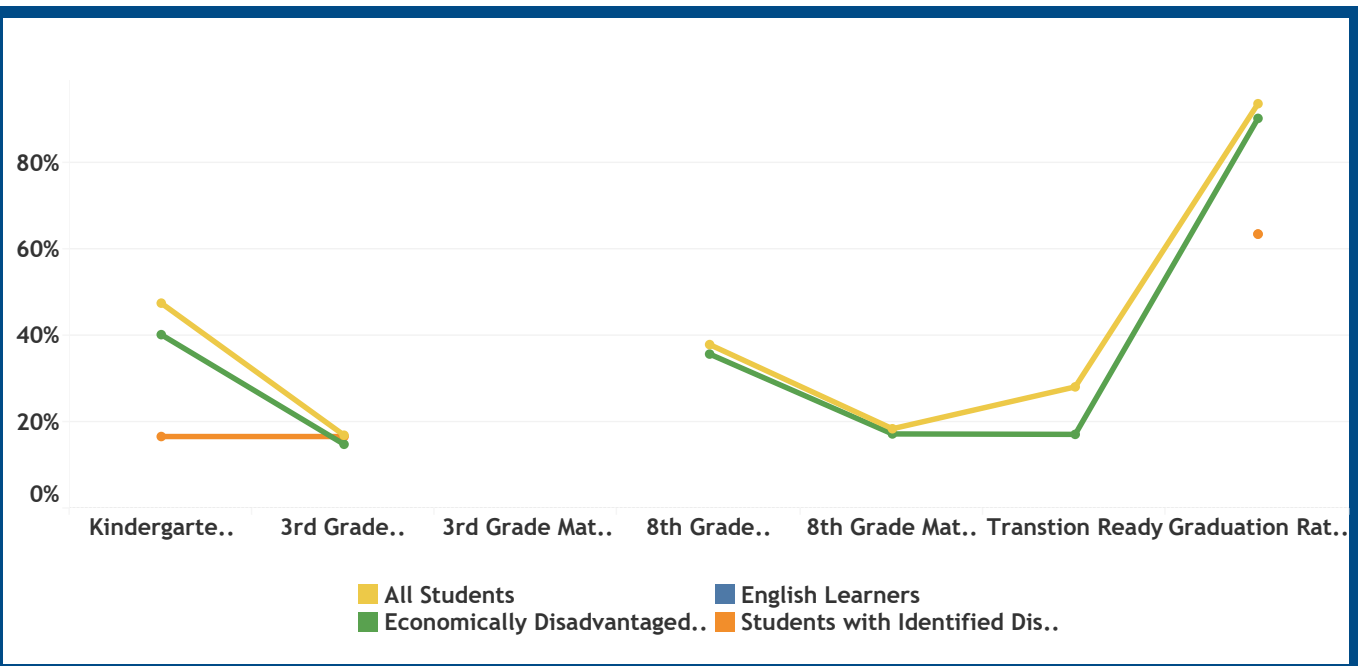


In a perfect world, all groups would be represented by a single line at 100%. Over time, we should see improvement that moves the lines closer together and higher on the chart.



Gaps are already visible early in the education pipeline. Most gaps persist from kindergarten to graduation, confirming that improvement is needed at all grade levels.

Note: If a data point on a line is missing or part of a group's line does not appear, data for that student group is unavailable. This may be due to concerns for student privacy, typically due to small sample size or results for students being similar enough that individual students may be identifiable.



## EDUCATION TRANSFORMS QUALITY OF LIFE

### 🇺🇸 ECONOMIC OUTCOMES

	COUNTY	STATE
MEDIAN HOUSEHOLD INCOME	\$37,386	\$50,589
UNEMPLOYMENT RATE	7.8%	6.6%
CHILDREN LIVING BELOW 200% POVERTY	60.2%	44.1%
POPULATION LIVING IN POVERTY		
	23.2%	17.3%
	COUNTY	STATE

### ❤️ HEALTH OUTCOMES

	COUNTY	STATE
LOW BIRTHWEIGHT	8.6%	8.8%
POOR OR FAIR HEALTH	29.1%	21.8%
TEEN BIRTHS (PER 1,000 FEMALES AGE 15-19)	47.84	31.29
ADULT OBESITY	33.7%	34.6%
ADULT SMOKING	28.9%	24.1%
PREMATURE DEATH (YEARS OF LIFE LOST PER..)	8,679	9,505
FLU VACCINE	41.0%	46.0%

### WHAT ELSE DO WE KNOW ABOUT OUR SCHOOL COMMUNITY?

**1,403 STUDENTS**

African American	Asian	Hispanic	Two or More Races	White
0.7%	0.2%	2.8%	1.1%	95.2%

- 73.2%** Students who qualify for free/reduced meals
- 14.7%** Students with identified disabilities
- 0.6%** English Learners

**\$13,774** District **EXPENDITURES PER PUPIL** **\$13,697** State

**81.00 TEACHERS**

African American	Asian	Hispanic	2 or More Races	White
0.0%	0.0%	0.0%	0.0%	100.0%