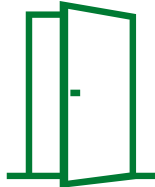


DAWSON SPRINGS INDEPENDENT SCHOOLS HOPKINS COUNTY

WHY DOES EDUCATION MATTER?



HIGHER
INCOME



BETTER JOB
OPPORTUNITIES



IMPROVED
HEALTH



MORE CIVIC
INVOLVEMENT



LOWER PUBLIC
ASSISTANCE

WHAT IS YOUR COMMUNITY'S STORY?

Every community has a unique story to tell. Many things contribute to the success of a community, but research shows that the key is a high-quality education system. This Community Profile shares data about how students in your community are progressing along their educational path. The full story of your community cannot be told by numbers alone - it must also be told through the stories and experiences of all the people who live there. This profile is meant to be a guide to help you and your neighbors explore how to pave the path to a larger life through education.

The power to transform your community is in your hands. All it takes is one. One person to begin the conversation. One person stepping forward to change the future of a community.

WHAT CAN YOU DO?

BE THE ONE TO START A CONVERSATION ABOUT THE FUTURE OF YOUR COMMUNITY.

1 Start by using this Community Profile to identify areas of your community's education performance you want to change. Share with a neighbor and ask questions like:



2 Find one thing you want to change and start digging deeper. Ask questions like:



3 Seek out people in your community to find answers. Bring others into the conversation. Push your friends and neighbors to think differently about how education works, and then take action together.

HOW ARE STUDENTS DOING ON THE PATH TO A SUCCESSFUL LIFE?

Preschool Enrollment

38%

District

42%

State

Over 85% of brain development occurs before age 5. The return on investment for preschool is \$5 for every \$1 invested.

Kindergarten Readiness

47%

District

51%

State

Kids who start kindergarten behind are less likely to do well in later school years.

3rd Grade Proficiency

READING

34%

District

52%

State

MATH

26%

District

47%

State

At this point, students increasingly need to "read to learn," not just "learn to read," so proficiency is critical.

This data and the lived experience of your neighbors tell the story of where your community is now, and where it is headed.

By 2020, 62% of jobs in Kentucky will require some postsecondary education.

Achievement in 8th grade is a critical indicator of whether a student is prepared for the increased academic challenges of high school.

8th Grade Proficiency

READING

61%

District

63%

State

MATH

36%

District

46%

State

High school graduation is a minimum and necessary step in the transition to college and a career.

Not only will more jobs in the future require some postsecondary education, but earnings for those with bachelor's degrees are 50% higher than those without a degree.

Transition Readiness

76%

District

60%

State

Graduation Rate

96%

District

90%

State

Postsecondary Enrollment

58%

District

53%

State

Postsecondary Attainment

27%

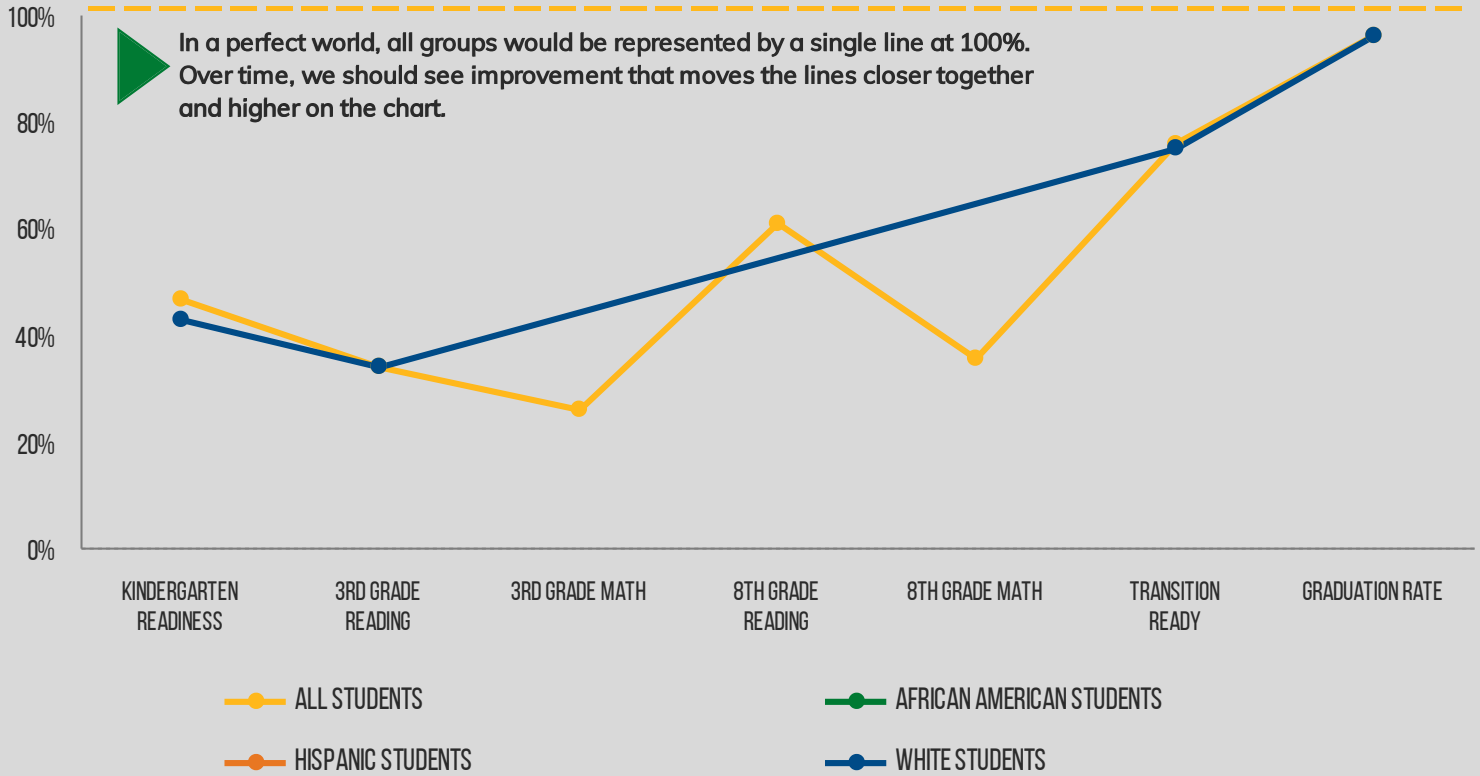
District

35%

State

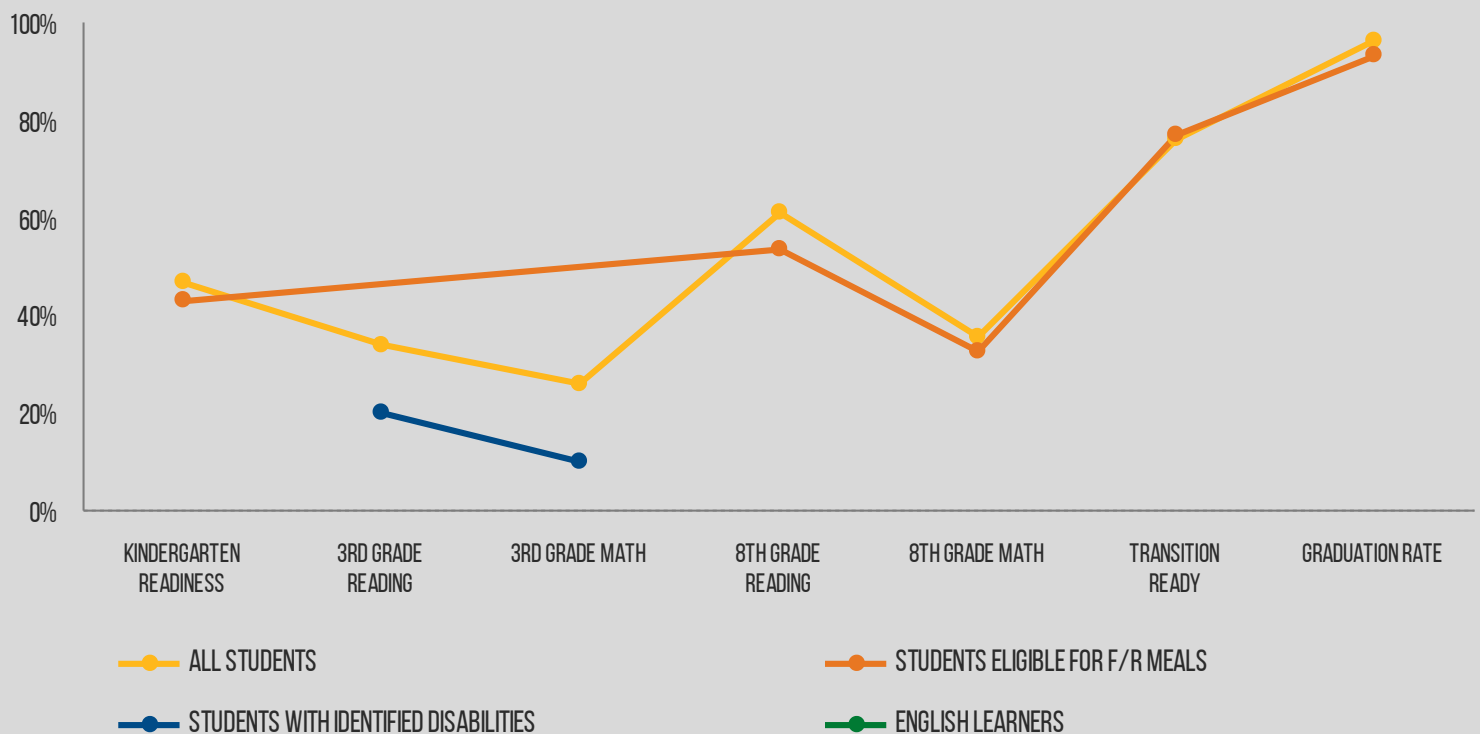
HOW DOES THIS PICTURE CHANGE ACROSS SCHOOLS AND WHY?

BUT NOT ALL STUDENTS START AT THE SAME PLACE



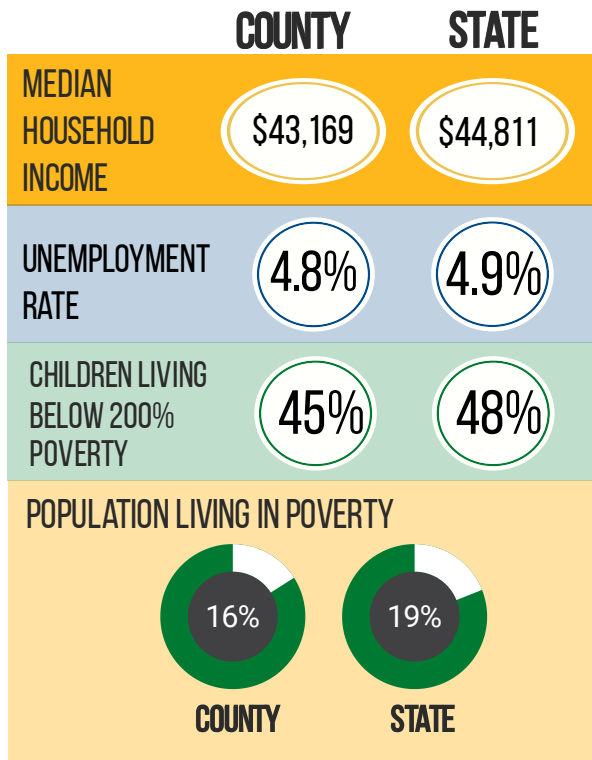
Gaps are already visible early in the education pipeline. Most gaps persist from kindergarten to graduation, confirming that improvement is needed at all grade levels.

NOTE: If a data point on a line is missing or part of group's line does not appear, data for that student group is unavailable. This may be due to concerns for student privacy, typically due to small sample size or results for students being similar enough that individual students may be identifiable.

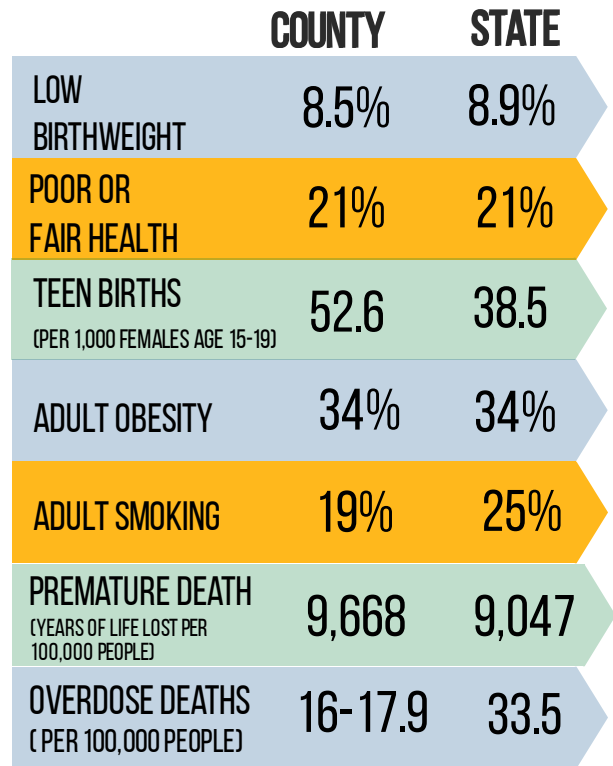


EDUCATION TRANSFORMS QUALITY OF LIFE

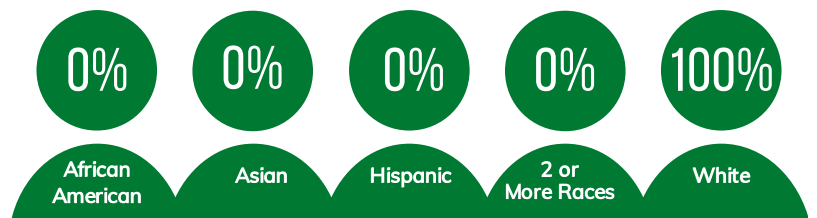
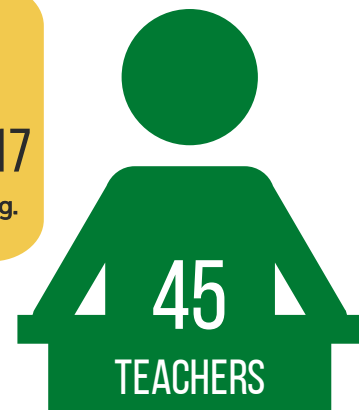
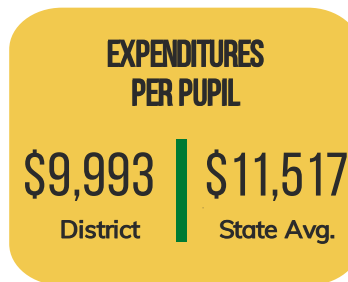
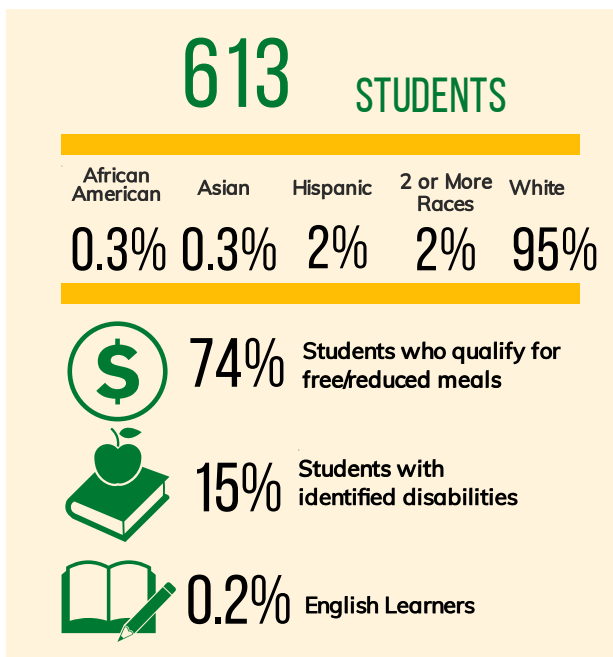
\$ ECONOMIC OUTCOMES



HEALTH OUTCOMES



WHAT ELSE DO WE KNOW ABOUT OUR SCHOOL COMMUNITY?



FIND MORE INFORMATION AT PRICHARDCOMMITTEE.ORG