



Interim Performance Report

In March 2009, the Kentucky General Assembly passed Senate Bill 1 (SB1) that was subsequently signed into law by the Governor. SB1 calls for a significant overhaul of the state's assessment and accountability system. The new assessment system begins in the spring of 2012. The school years of 2008-2009, 2009-2010 and 2010-2011 are described in SB1 as an interim period. This three-year period allows Kentucky to develop the new assessment system and to carry on state and federal testing requirements.

The Interim Performance Report includes the Kentucky Core Content Test (KCCT) in Reading (grades 3-8 and 10), Mathematics (grades 3-8 and 11), Science (grades 4, 7 and 11), Social Studies (grades 5, 8 and 11) and Writing On-Demand (grades 5, 8 and 12). The KCCT is based on the Kentucky Core Content for Assessment (Version 4.1) and contains multiple choice and open response questions. The Writing On-Demand test uses writing prompts that require students to craft a piece of writing in a 60 minute period.

The KCCT is developed under the direction of content advisory committees of Kentucky educators who draft, review and select test questions. All test items are reviewed by a bias review committee to enhance the fairness of items for all Kentucky students.

The KCCT continues to fulfill the requirements of the federal statute known as the No Child Left Behind Act of 2001. A separate accountability report for No Child Left Behind (NCLB) is published by the Kentucky Department of Education.

The Interim Performance Report focuses entirely on the five state-required content areas and provides data for schools or districts. The data in this report is not used directly for state accountability; although, these results can fulfill the requirements of Senate Bill 168 from 2002 and may be used by schools or districts for their own local accountability needs.

Performance standards are based on descriptions of Novice, Apprentice, Proficient and Distinguished (NAPD) student performance levels specific to the content area and grade being assessed. The performance standards, in conjunction with Kentucky's Core Content for Assessment, should allow instruction to better focus on the content area to be taught and on how well students must demonstrate achievement in each content area.

Reporting Changes for 2009

Based on SB1, Kentucky will not be reporting state accountability and academic indices as in the past. The report does have several familiar pages with performance level (NAPD) trend, core content and disaggregation data per content area. Districts and schools will still see distributions of how students scored in the Novice (with sublevels), Apprentice (with sublevels), Proficient and Distinguished performance levels.

Confidentiality Changes

Due to federal regulations around the Family Education Rights and Privacy Act (FERPA), the numbers of students have been removed. Though there is a need to report as much data as possible, there is also a paramount need to maintain the confidential aspects of individual scores. When scores are reported in what is commonly called "small cells" where very few students may be categorized, there is the possibility of revealing individual scores when numbers are reported. Numbers are reported to each district in a confidential report that accompanies the public Interim Performance Report.

**2008-2009
INTERIM PERFORMANCE REPORT**

District: Jefferson County
Code: 275
Grade: PRIMARY-12

CONTENTS OF THIS REPORT

Introduction	1		
	ELEMENTARY	MIDDLE	HIGH
Academic Trend Data			
Reading Results	2-8	25-31	48-50
Mathematics Results	9-15	32-38	51-53
Science Results	16-18	39-41	54-56
Social Studies Results	19-21	42-44	57-59
Writing Results	22-24	45-47	60-62

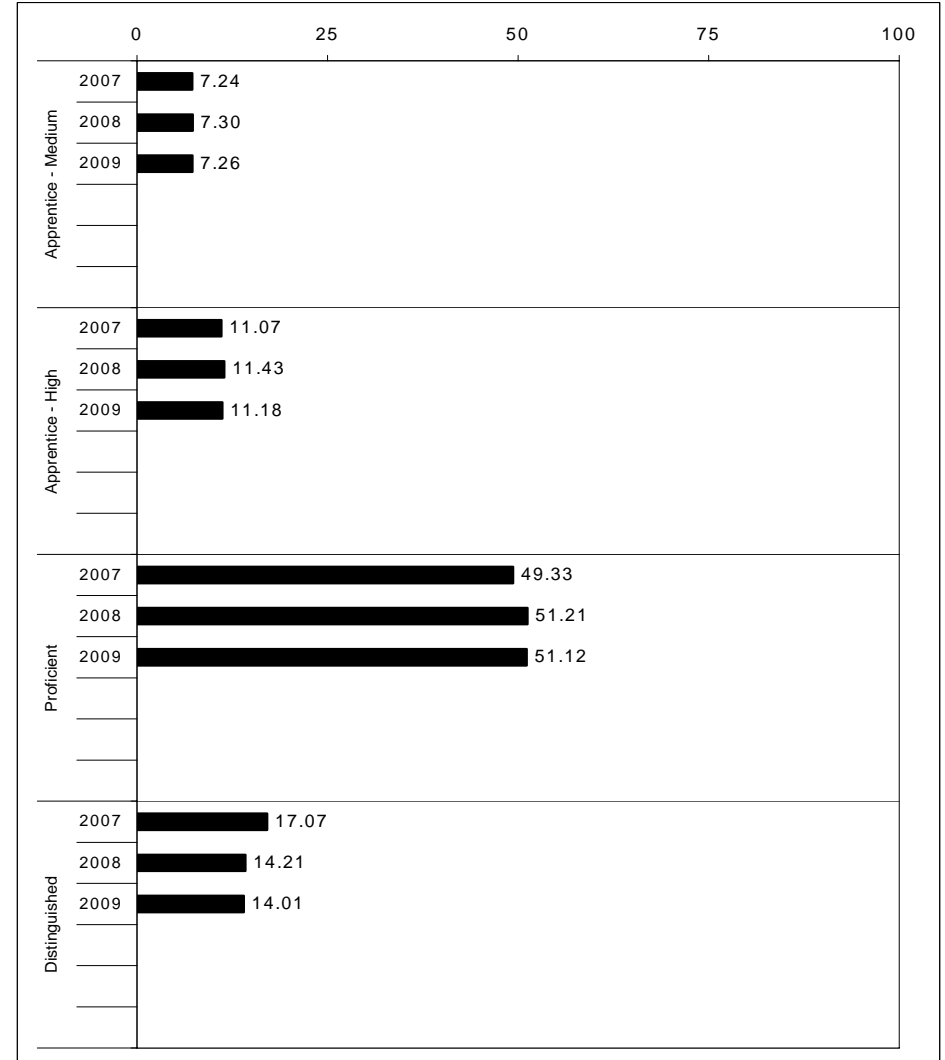
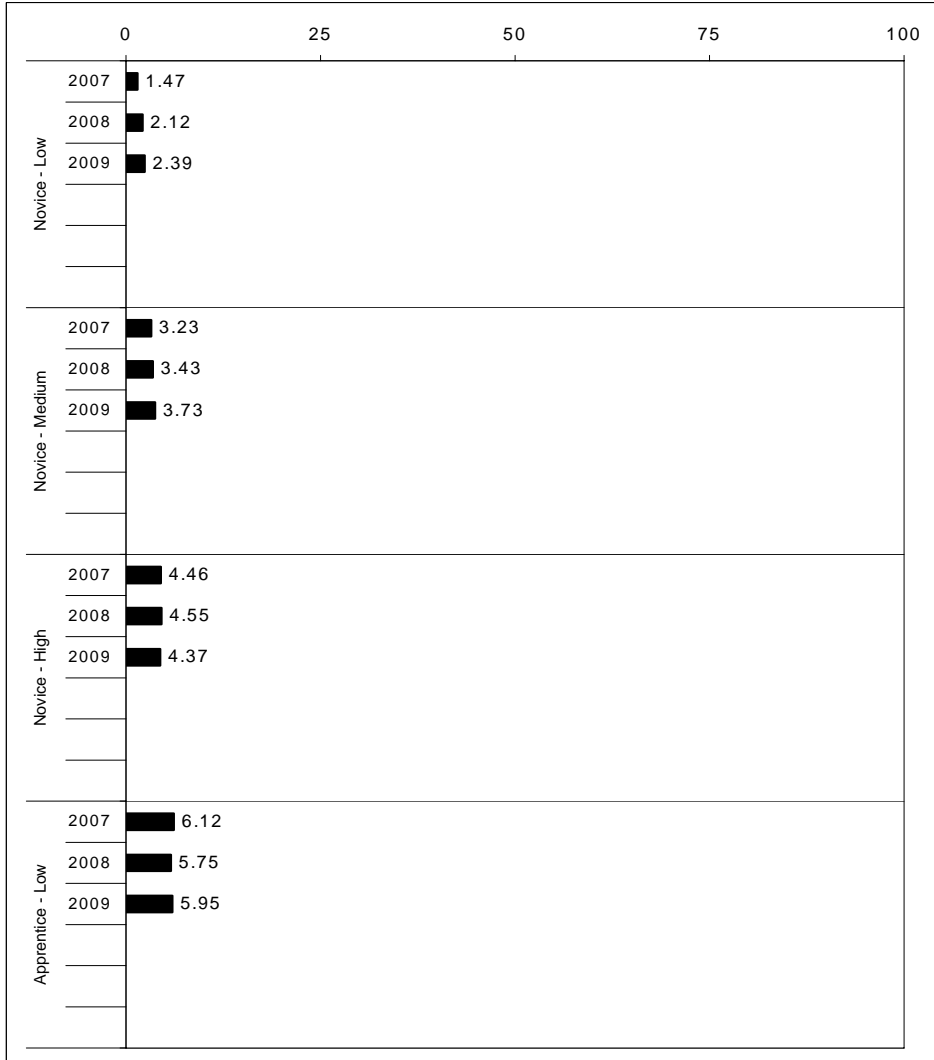
For more information, refer to the 2009 KIA Interpretative Guide on the Kentucky Department of Education Web site (www.education.ky.gov).





2008-2009
INTERIM PERFORMANCE REPORT
READING TREND DATA
Performance Level Percents

District: Jefferson County
 Code: 275
 Grade: ELEMENTARY

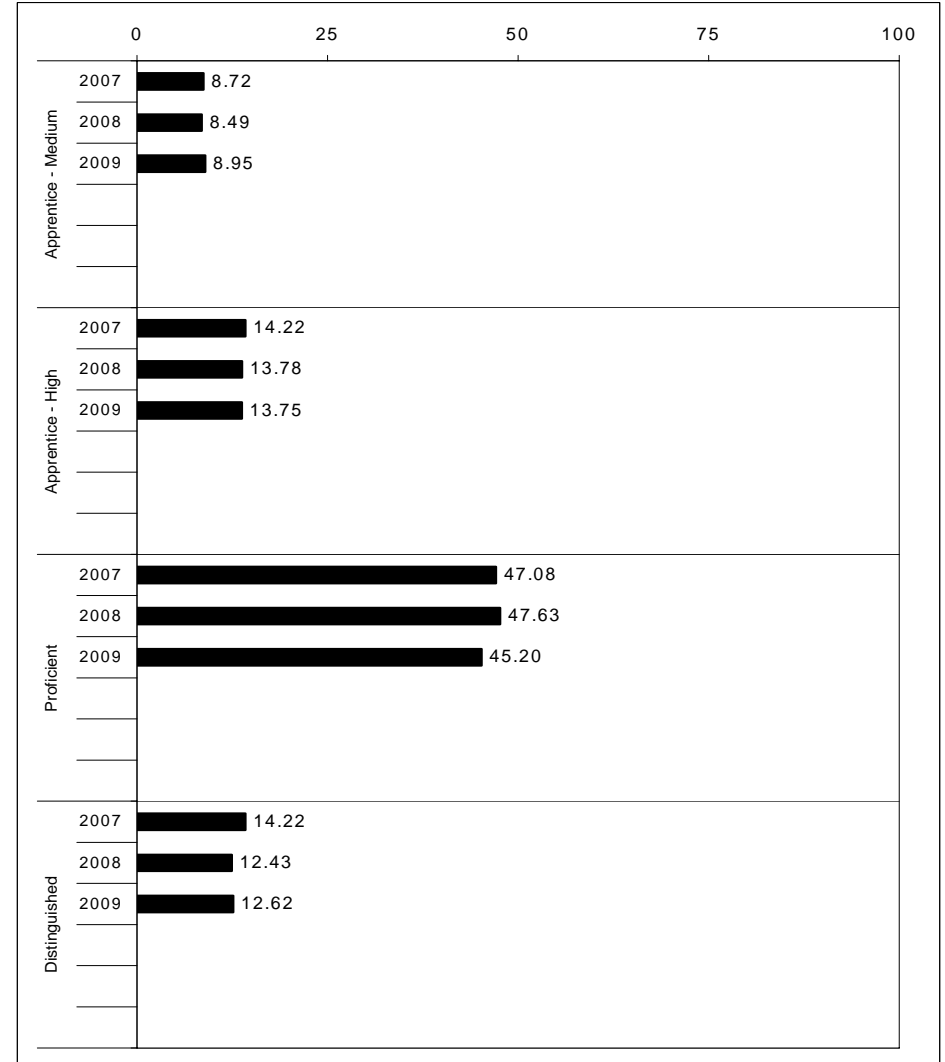


The horizontal bar represents the percent of students scoring at a performance level within a particular year. Percentages may not sum to 100% due to rounding.



2008-2009
INTERIM PERFORMANCE REPORT
READING TREND DATA
Performance Level Percents

District: Jefferson County
 Code: 275
 Grade: MIDDLE

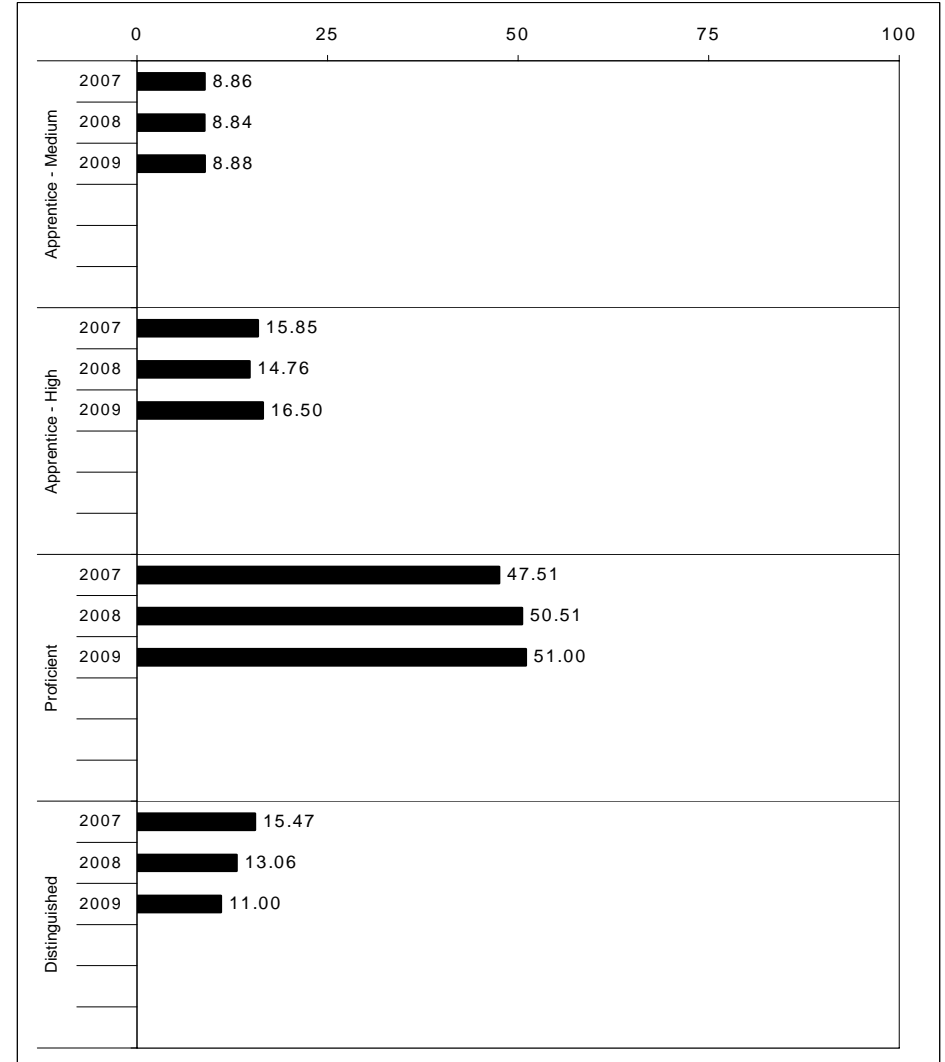
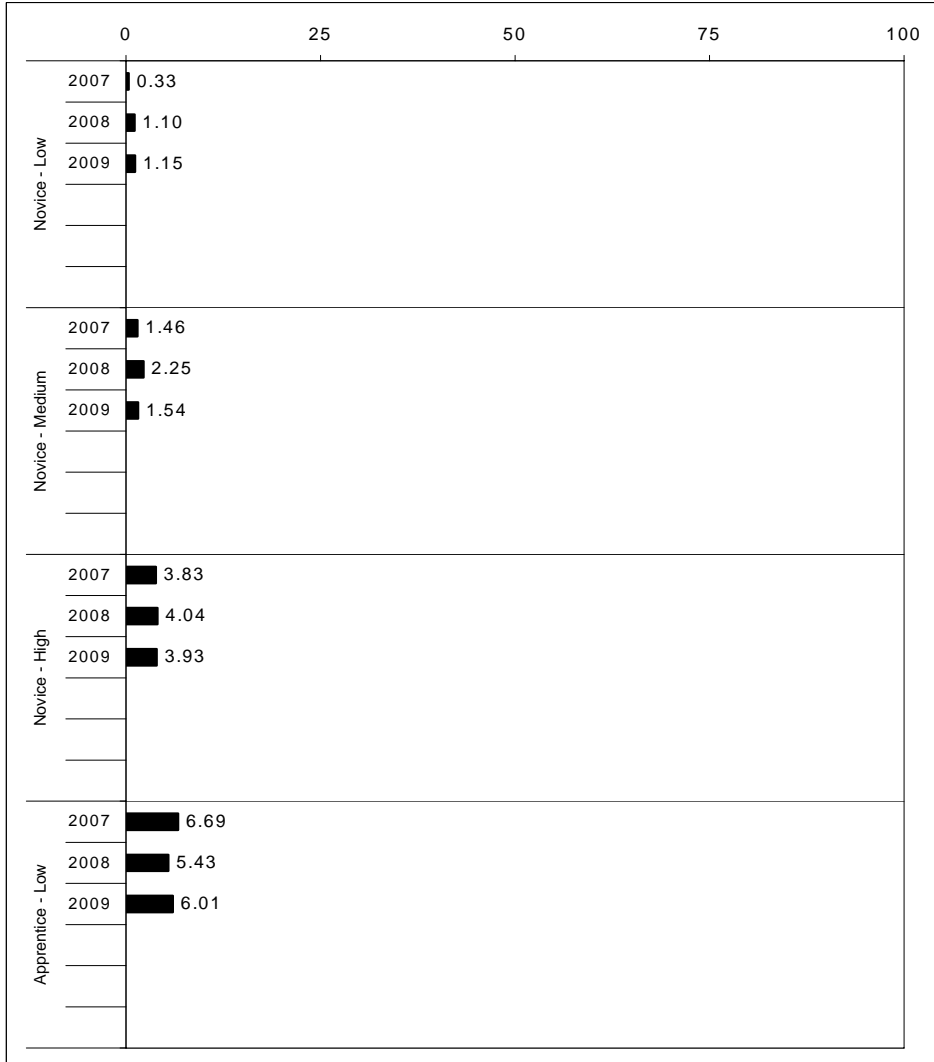


The horizontal bar represents the percent of students scoring at a performance level within a particular year. Percentages may not sum to 100% due to rounding.



2008-2009
INTERIM PERFORMANCE REPORT
READING TREND DATA
Performance Level Percents

District: Jefferson County
 Code: 275
 Grade: HIGH



The horizontal bar represents the percent of students scoring at a performance level within a particular year. Percentages may not sum to 100% due to rounding.